




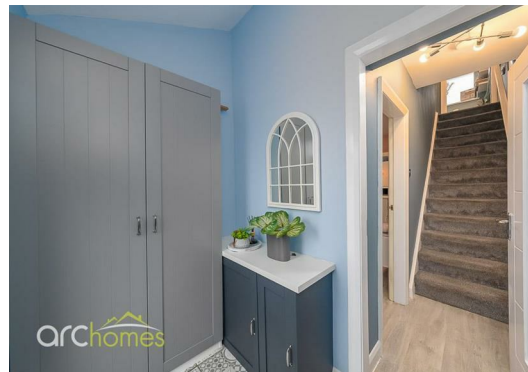
4 Hindles Close, Atherton, M46 OPS £180,000

ARC HOMES are delighted to offer FOR SALE this gorgeous three bedroom mid mews property positioned within a sought after spot in Howe Bridge. This beautiful home is presented to a very high standard and boasts generous accommodation together with off road parking. This beautiful home would suit a range of buyers and early viewing is highly advised. Entry is via an entrance porch and hallway which leads into a well proportioned sitting room. To the rear sits a fantastic modern kitchen dining room. To the forest floor are three generous bedrooms and a modern shower room. Outside, this property is positioned with a sought after spot with the front gardens providing off road parking. The encoded ear gardens are laid to lawn and provide generous outdoor space together with a good degree of privacy.



Energy Efficiency Rating		Current	Potential
Very energy efficient - lower running costs			
(92 plus) A			
(81-91) B			
(69-80) C			
(55-68) D			
(39-54) E		53	
(21-38) F			
(1-20) G			
Not energy efficient - higher running costs			
England & Wales		EU Directive 2002/91/EC 	

Environmental Impact (CO ₂) Rating		Current	Potential
Very environmentally friendly - lower CO ₂ emissions			
(92 plus) A			
(81-91) B			
(69-80) C			
(55-68) D			
(39-54) E			
(21-38) F			
(1-20) G			
Not environmentally friendly - higher CO ₂ emissions			
England & Wales		EU Directive 2002/91/EC 	



30 Bolton Old Road, Atherton, M46 9DL

T. 01942 363599
info@arc-homes.net

